



# BUSINESS REPORT

Date: **21st August 2025**

Business Reference: **BFS11020**

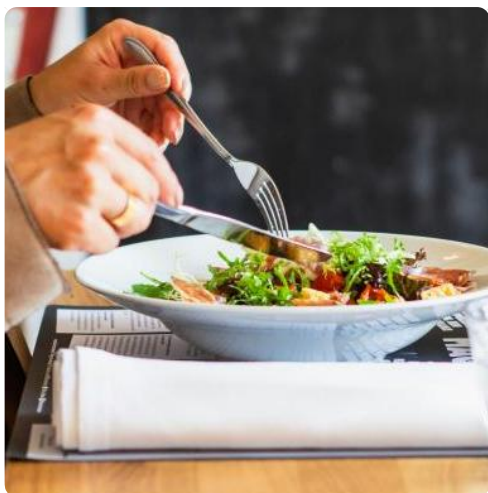
About the Business:

## Unique Health/Wellness Restaurant in Helderberg area

---

This Restaurant has established a robust online presence and maintains an impressive 4,8 out of 5 rating on Google. Over the past few years, it has effectively built and solidified its reputation in the industry.

# Unique Health/Wellness Restaurant in Helderberg area



Sector: **Food**

Asking Price:

**R 2,200,000**

Monthly Profit:

**R 61,250**

Asset Value:

**R 970,000**

Stock Value:

**R 50,000**

Yearly Net Profit :

**R 735,000**



# Business Report

## Background and History

Step into a culinary haven where health meets art, and every meal is a celebration of both taste and aesthetics. This extraordinary eatery isn't just a place to eat- its an experience .

Each dish is meticulously crafted to delight the palate and captivate the eyes, with hot beverages that stand out as some of the finest in the region.

This café accommodates a range of dietary needs, offering gluten-free, vegan and vegetarian options.

The interior design, inspired by the vibrant culture of Southern Asia, reflects a vision of sophistication and elegance. Every detail, from the high-end equipment to the thoughtfully arranged space has been curated to create an atmosphere that promotes happiness, joy and well being.

Perfectly situated in a bustling tourist area, while remaining accessible to the local community, this business offers a prime location with immense potential for growth. No expense has been spared in crafting an environment that embodies class and comfort.

The kitchen is a standout feature of the establishment, boasting virtually brand-new high end equipment that supports the creation of top-tier health dishes.

This business has established a robust online presence and maintains an impressive 4,8 out of 5 rating on Google. Over the past few years, it has effectively built and solidified its reputation in the industry.

The current owner, due to new commitments, is seeking a dedicated, health-conscious individual or team to carry forward this remarkable experience. With numerous opportunities for brand expansion and innovation still to be explored , this is a chance to build on a strong foundation and elevate the business to new heights

## Products and Services

Health and wellness restaurant in Helderberg/Winelands area

## Assets

R970,000

## Employees

## Financials and Forecasts

Annual turnover R2,400,000

COS 40% R960,000 per annum

GP 60% R1,44 million per annum

NP (EBITDA) R735,000

## Reason for Sale

Immigrating